



EnergyShield® CGF Pro

Continuous Wall Insulation

DESCRIPTION: Atlas EnergyShield® CGF Pro (formerly Rboard Pro) is composed of a Class A fire rated closed cell polyisocyanurate (polyiso) foam core faced with a high performance coated glass facer on the front and back. One side of the product is dark gray for use in open joint rainscreen applications. EnergyShield® CGF Pro combines high R-value, durable glass facers, and water resistive barrier attributes in a high performance rigid insulation board. This product has been validated by UL Environment as resistant to mold growth based on independent testing to UL 2824.

Panel sizes are 4' by 8' or 4' by 9'. Panels can be supplied in nominal 16" or 24" widths for use in cavity wall applications. Custom sizes are also available.

APPLICATION: EnergyShield® CGF Pro is recommended for use in both commercial and residential applications due to the Class A fire rating.

Common applications include:

- Exterior cavity walls
- Exterior sheathing for walls framed with wood or steel studs
- Exterior CI (continuous insulation) for cmu/block/concrete wall systems
- Exterior CI for installation over wood or gypsum sheathings
- Use over existing cladding to improve energy efficiency and provide a level surface prior to installing new cladding

ENERGYSHIELD® CGF PRO MEETS OR EXCEEDS THE FOLLOWING PHYSICAL PROPERTIES

PROPERTY	TEST METHOD	TEST METHOD MINIMUM REQUIREMENTS
FLAME SPREAD	ASTM E84	<25
SMOKE DEVELOPMENT	ASTM E84	<450
MOISTURE VAPOR TRANSMISSION (ASTM E96 DESICCANT METHOD)	ASTM E96	1.2 Perm at 1-inch
WATER ABSORPTION	ASTM C209	<1% by Volume *Typical Results <0.5% by Volume
DIMENSIONAL STABILITY	ASTM D2126	<2% Linear Change *Typical Results <1% Linear Change
SERVICE TEMPERATURES	-	-100°F to +250°F (-73°C to 122°C)

THERMAL DATA

R-VALUE ^{1,2}	NOMINAL BOARD THICKNESS ³
3.0	0.5"
4.5	0.75"
6.0	1.0"
9.0	1.5"
12.1	2.0"
15.3	2.5"
18.5	3.0"
21.7	3.5"

¹ Conditioned thermal values were determined by ASTM Test Method C 518 at 75° mean temperature. Test specimens were conditioned in accordance with procedures outlined in ASTM C1289, Section 11.1.2.1

² "R" means resistance to heat flow. The higher the R-value, the greater the insulating power.

³ Other sizes available upon request. Contact your local Atlas sales office.

CODES AND COMPLIANCES

- **ASTM C1289 Type II, Class 2**
- **NFPA 285** (consult Atlas for our extensive list of approved assemblies)
- **ASTM E84 Flame Spread**, less than 25
- **ASHRAE 90.1 / ASHRAE 189.1 / IECC / IGCC** Continuous Insulation Standards
- **International Building Code (IBC)**, Section 2603
- **International Residential Code (IRC)**, Section R316
- **Water Resistive Barrier** ICC-ES ESR-1375
- **California State** Insulation Quality Standards and Title 25 Foam Flammability Criteria (T 1231)
- **UL Listed for flame spread**, see BRYX.R13089
- **UL Standard 263 (ASTM E119)** hourly rated wall approvals (see UL Online Directories for 13 designs)
- **PE Evaluation of fire properties**, see TER 1306-03
- **UL 2824** resistant to mold growth as validated by UL Environment
- **Has achieved GREENGUARD GOLD Certification**



PRODUCT CERTIFIED FOR LOW
CHEMICAL EMISSIONS: UL.COM/GG
UL 2818





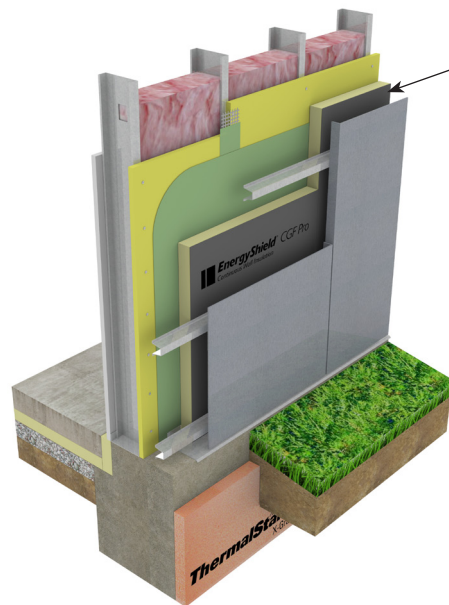
EnergyShield® CGF Pro

Continuous Wall Insulation

INSTALLATION: EnergyShield® CGF Pro may be installed over common types of construction substrates using fasteners and adhesives. This includes concrete, wood, wood stud, steel stud, glass-mat gypsum and air and vapor barrier membranes. For specific installation instructions, contact Atlas.

CONFIGURATION FOR WATER RESISTIVE BARRIER (WRB) AND AIR BARRIER:

The configuration of weather resistive barriers and/or air barriers used in conjunction with EnergyShield® CGF Pro is the responsibility of the designer. Atlas recommends sealing into rough opening flashing and to other portions of the building, including the roof and below grade. Atlas EnergyShield® CGF Pro coated glass facers are compatible with most standard joint fillers, sealants and adhesives. Consult the product manufacturer for specific compatibility.



EnergyShield® CGF Pro facers add durability to help protect the integrity of the CI during the construction process.

PRECAUTIONS / LIMITATIONS:

- While EnergyShield® CGF Pro is a Class A rated product, it will burn and may contribute to flames spreading and smoke developing.
- Design use of this product must always follow local codes, especially with regards to WRB, Air Barrier and Vapor Retarder. Atlas highly recommends the use of a dew point calculation of the proposed wall assembly to determine the types and locations of weather resistive barriers as well as needed insulation thickness/ R-value to mitigate any condensation potential.
- EnergyShield® CGF Pro is not a structural product, local codes must be followed for bracing requirements
- Storage: Boards should be stored indoors. If left outdoors for any length of time, keep dry by covering completely with a waterproof tarpaulin. Store on flat pallets elevated at least 4" above the floor or ground and standing water.
- Follow the cladding manufacturer's recommendation for attachment of the cladding.
- EnergyShield® CGF Pro is not intended to be exposed in excess of 180 days. Atlas recommends that all of the wall cladding material be installed within 180 days of installing the product.

WARRANTY: A 20-year limited thermal warranty is available. Please see www.atlasroofing.com or contact your Atlas representative. Atlas Roofing Corporation assumes no responsibility for building design or construction, which is solely the responsibility of the owner, architect, engineer or contractor.

Technical specifications are intended as general guidelines only, physical properties are representative based on testing, no warranties are given except for those specifically written by Atlas for its products.

LOCAL Production and Support: Atlas has the largest production footprint of any polyiso manufacturer for quick access to the products you need.

Camp Hill, PA	Diboll, TX	East Moline, IL	LaGrange, GA	Northglenn, CO	Phoenix, AZ	Toronto, ON	Vancouver, BC
(800) 688-1476	(800) 766-1476	(800) 677-1476	(800) 955-1476	(800) 288-1476	(800) 477-1476	(888) 647-1476	(855) 265-1476
Fax: (717) 975-6957	Fax: (936) 829-5363	Fax: (866) 740-6019	Fax: (706) 882-4047	Fax: (303) 252-4417	Fax: (602) 477-8897	Fax: (877) 909-4001	Fax: (604) 395-836